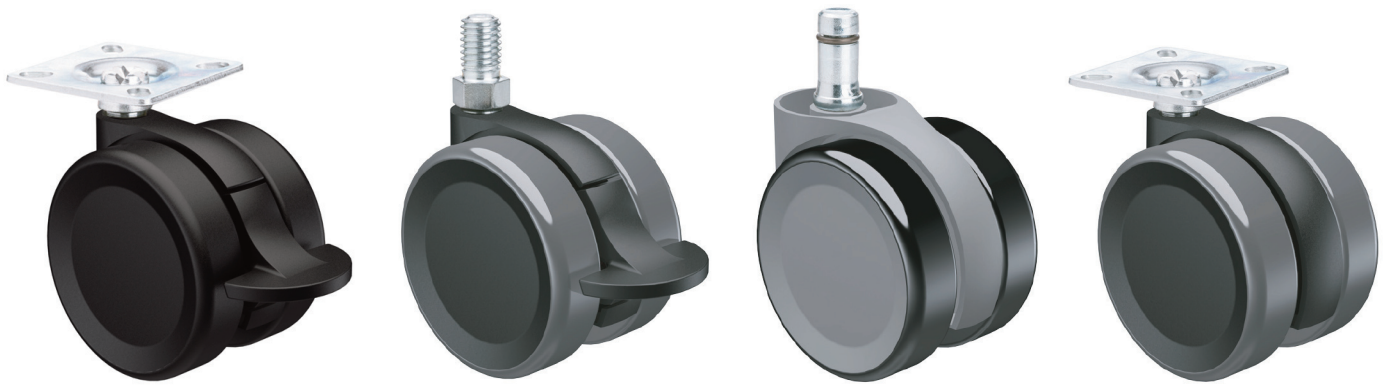


# GUY-RAYMOND



**GRX65 C-LINE**

Rollen ■ Roulettes ■ Ruedas

# GRX6518 C-LINE CASTORS

## SPECIFICATION

### CASTOR TYPE

Swivel

### MATERIALS

Castor PA  
Soft Tyre PUR

### STANDARD COLOURS

Black  
Aluminium RAL 9006  
White RAL 9003

### STANDARDS

EN 12528

## TECHNISCHE DATEN

### ROLLEN TYP

Lenkrolle

### MATERIAL

Rollen PA  
Weiche Lauffläche PUR

### STANDARDFARBEN

Schwarz  
Aluminium RAL 9006  
Weiss RAL 9003

### NORMEN

EN 12528

## SPECIFICATION

### TYPE DE ROULETTE

Pivotante

### MATIERES

Roulette PA  
Bandes Souples PUR

### COLORIS STANDARD

Noir  
Alu RAL 9006  
Blanc RAL 9003

### NORMES

EN 12528

## ESPECIFICACION

### TIPO DE RUEDA

Giratoria

### MATERIALES

Rueda Nilón  
Rodadura Blanda Poliuretano

### COLORES ESTANDAR

Negro  
Plateado RAL 9006  
Blanco RAL 9003

### NORMAS

EN 12528



65



66



18



9



49



22.5



58



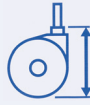
50kg

### NO.

6000-1-K  
6003-1-K  
6008-1-K  
6002-1-K  
6036-1-K  
6004-1-K  
6051-1-K  
6009-1-K



-----  
Ø 11 x 22mm  
Ø 10 x 22mm  
M10 x 15mm  
M12 x 20mm  
38 x 38mm Plate  
42 x 42mm Plate  
55 x 55mm Plate



66  
69.5  
69.5  
72.5  
72.5  
74.5  
74.5  
77.0



-  
22  
22  
15  
20  
-  
-  
-

### BLACK - HARD WHEEL GRX6518 C-LINE



### NO.

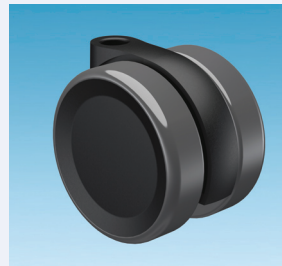
6000-1-1U-K  
6003-1-1U-K  
6008-1-1U-K  
6002-1-1U-K  
6036-1-1U-K  
6004-1-1U-K  
6051-1-1U-K  
6009-1-1U-K

-----  
Ø 11 x 22mm  
Ø 10 x 22mm  
M10 x 15mm  
M12 x 20mm  
38 x 38mm Plate  
42 x 42mm Plate  
55 x 55mm Plate

66  
69.5  
69.5  
72.5  
72.5  
74.5  
74.5  
77.0

-  
22  
22  
15  
20  
-  
-  
-

### BLACK - SOFT TYRE GRX6518 C-LINE



### NO.

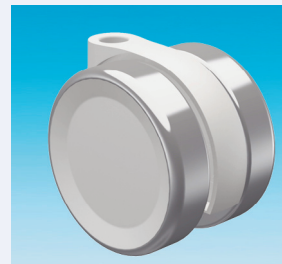
6000-3-3U-K  
6003-3-3U-K  
6008-3-3U-K  
6002-3-3U-K  
6036-3-3U-K  
6004-3-3U-K  
6051-3-3U-K  
6009-3-3U-K

-----  
Ø 11 x 22mm  
Ø 10 x 22mm  
M10 x 15mm  
M12 x 20mm  
38 x 38mm Plate  
42 x 42mm Plate  
55 x 55mm Plate

66  
69.5  
69.5  
72.5  
72.5  
74.5  
74.5  
77.0

-  
22  
22  
15  
20  
-  
-  
-

### WHITE - RAL 9003 SOFT TYRE GRX6518 C-LINE



### NO.

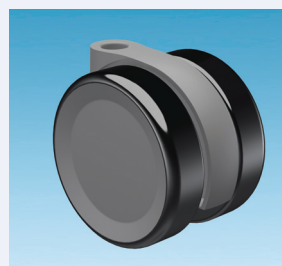
6000-64-64-T1U-K  
6003-64-64-T1U-K  
6008-64-64-T1U-K  
6002-64-64-T1U-K  
6036-64-64-T1U-K  
6004-64-64-T1U-K  
6051-64-64-T1U-K  
6009-64-64-T1U-K

-----  
Ø 11 x 22mm  
Ø 10 x 22mm  
M10 x 15mm  
M12 x 20mm  
38 x 38mm Plate  
42 x 42mm Plate  
55 x 55mm Plate

66  
69.5  
69.5  
72.5  
72.5  
74.5  
74.5  
77.0

-  
22  
22  
15  
20  
-  
-  
-

### ALUMINIUM - RAL 9006 SOFT TYRE GRX6518 C-LINE



Ø 11 x 22mm

Ø 10 x 22mm

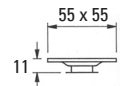
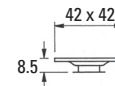
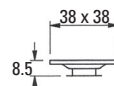
M10 x 15mm

M12 x 20mm

38 x 38 mm Plate

42 x 42mm Plate

55 x 55mm Plate



# GRX6518FB WHEEL BRAKE C-LINE CASTORS

## SPECIFICATION

### CASTOR TYPE

Wheel Brake

### MATERIALS

Castor PA  
Soft Tyre PUR

### STANDARD COLOURS

Black  
Aluminium RAL 9006  
White RAL 9003

### STANDARDS

EN 12528

## TECHNISCHE DATEN

### ROLLEN TYP

Radfeststeller

### MATERIAL

Rollen PA  
Weiche Lauffläche PUR

### STANDARDFARBEN

Schwarz  
Aluminium RAL 9006  
Weiss RAL 9003

### NORMEN

EN 12528

## SPECIFICATION

### TYPE DE ROULETTE

Blocage de Roue

### MATIERES

Roulette PA  
Bandes Souples PUR

### COLORIS STANDARD

Noir  
Alu RAL 9006  
Blanc RAL 9003

### NORMES

EN 12528

## ESPECIFICACION

### TIPO DE RUEDA

Freno de Rueda

### MATERIALES

Rueda Nilón  
Rodadura Blanda Poliuretano

### COLORES ESTANDAR

Negro  
Plateado RAL 9006  
Blanco RAL 9003

### NORMAS

EN 12528



65



66



18



9



49



22.5



76



50kg

### NO.

5100-1-K  
5103-1-K  
5108-1-K  
5102-1-K  
5136-1-K  
5104-1-K  
5151-1-K  
5109-1-K



-----  
Ø 11 x 22mm  
Ø 10 x 22mm  
M10 x 15mm  
M12 x 20mm  
38 x 38mm Plate  
42 x 42mm Plate  
55 x 55mm Plate



66  
69.5  
69.5  
72.5  
72.5  
74.5  
74.5  
77.0



-  
22  
22  
15  
20  
-  
-  
-

### BLACK - HARD WHEEL GRX6518FB C-LINE



### NO.

5100-1-1U-K  
5103-1-1U-K  
5108-1-1U-K  
5102-1-1U-K  
5136-1-1U-K  
5104-1-1U-K  
5151-1-1U-K  
5109-1-1U-K

-----  
Ø 11 x 22mm  
Ø 10 x 22mm  
M10 x 15mm  
M12 x 20mm  
38 x 38mm Plate  
42 x 42mm Plate  
55 x 55mm Plate

66  
69.5  
69.5  
72.5  
72.5  
74.5  
74.5  
77.0

-  
22  
22  
15  
20  
-  
-  
-

### BLACK - SOFT TYRE GRX6518FB C-LINE



### NO.

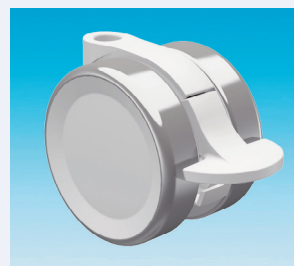
5100-3-3U-K  
5103-3-3U-K  
5108-3-3U-K  
5102-3-3U-K  
5136-3-3U-K  
5104-3-3U-K  
5151-3-3U-K  
5109-3-3U-K

-----  
Ø 11 x 22mm  
Ø 10 x 22mm  
M10 x 15mm  
M12 x 20mm  
38 x 38mm Plate  
42 x 42mm Plate  
55 x 55mm Plate

66  
69.5  
69.5  
72.5  
72.5  
74.5  
74.5  
77.0

-  
22  
22  
15  
20  
-  
-  
-

### WHITE RAL 9003 SOFT TYRE GRX6518FB C-LINE



### NO.

5100-64-64-T1U-K  
5103-64-64-T1U-K  
5108-64-64-T1U-K  
5102-64-64-T1U-K  
5136-64-64-T1U-K  
5104-64-64-T1U-K  
5151-64-64-T1U-K  
5109-64-64-T1U-K

-----  
Ø 11 x 22mm  
Ø 10 x 22mm  
M10 x 15mm  
M12 x 20mm  
38 x 38mm Plate  
42 x 42mm Plate  
55 x 55mm Plate

66  
69.5  
69.5  
72.5  
72.5  
74.5  
74.5  
77.0

-  
22  
22  
15  
20  
-  
-  
-

### ALUMINIUM RAL 9006 SOFT TYRE GRX6518FB C-LINE



Ø 11 x 22mm

Ø 10 x 22mm

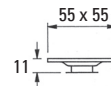
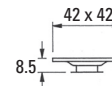
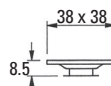
M10 x 15mm

M12 x 20mm

38 x 38 mm Plate

42 x 42mm Plate

55 x 55mm Plate



# GRX6528 C-LINE CASTORS

## SPECIFICATION

### CASTOR TYPE

Swivel

### MATERIALS

Castor PA  
Soft Tyre PUR

### STANDARD COLOURS

Black  
Aluminium RAL 9006  
White RAL 9003

### STANDARDS

EN 12528

## TECHNISCHE DATEN

### ROLLEN TYP

Lenkrolle

### MATERIAL

Rollen PA  
Weiche Lauffläche PUR

### STANDARDFARBEN

Schwarz  
Aluminium RAL 9006  
Weiss RAL 9003

### NORMEN

EN 12528

## SPECIFICATION

### TYPE DE ROULETTE

Pivotante

### MATIERES

Roulette PA  
Bandes Souples PUR

### COLORIS STANDARD

Noir  
Alu RAL 9006  
Blanc RAL 9003

### NORMES

EN 12528

## ESPECIFICACION

### TIPO DE RUEDA

Giratoria

### MATERIALES

Rueda Nilón  
Rodadura Blanda Poliuretano

### COLORES ESTANDAR

Negro  
Plateado RAL 9006  
Blanco RAL 9003

### NORMAS

EN 12528



65



69



28



9



49



22.5



58



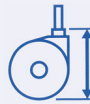
50kg

### NO.

3900-1-K  
3903-1-K  
3908-1-K  
3902-1-K  
3936-1-K  
3904-1-K  
3951-1-K  
3909-1-K



-----  
Ø 11 x 22mm  
Ø 10 x 22mm  
M10 x 15mm  
M12 x 20mm  
38 x 38mm Plate  
42 x 42mm Plate  
55 x 55mm Plate



69  
71  
71  
73.5  
73.5  
75.5  
75.5  
78



-  
22  
22  
15  
20  
-  
-  
-

### BLACK - HARD WHEEL GRX6528 C-LINE



### NO.

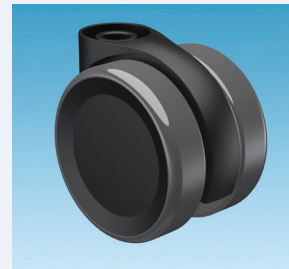
3900-1-1U-K  
3903-1-1U-K  
3908-1-1U-K  
3902-1-1U-K  
3936-1-1U-K  
3904-1-1U-K  
3951-1-1U-K  
3909-1-1U-K

-----  
Ø 11 x 22mm  
Ø 10 x 22mm  
M10 x 15mm  
M12 x 20mm  
38 x 38mm Plate  
42 x 42mm Plate  
55 x 55mm Plate

69  
71  
71  
73.5  
73.5  
75.5  
75.5  
78

-  
22  
22  
15  
20  
-  
-  
-

### BLACK - -SOFT TYRE GRX6528 C-LINE



### NO.

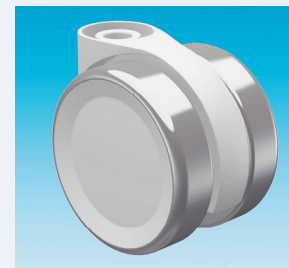
3900-3-3U-K  
3903-3-3U-K  
3908-3-3U-K  
3902-3-3U-K  
3936-3-3U-K  
3904-3-3U-K  
3951-3-3U-K  
3909-3-3U-K

-----  
Ø 11 x 22mm  
Ø 10 x 22mm  
M10 x 15mm  
M12 x 20mm  
38 x 38mm Plate  
42 x 42mm Plate  
55 x 55mm Plate

69  
71  
71  
73.5  
73.5  
75.5  
75.5  
78

-  
22  
22  
15  
20  
-  
-  
-

### WHITE RAL 9003 SOFT TYRE GRX6528 C-LINE



### NO.

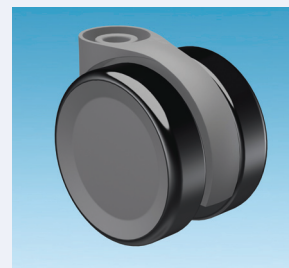
3900-64-64-T1U-K  
3903-64-64-T1U-K  
3908-64-64-T1U-K  
3902-64-64-T1U-K  
3936-64-64-T1U-K  
3904-64-64-T1U-K  
3951-64-64-T1U-K  
3909-64-64-T1U-K

-----  
Ø 11 x 22mm  
Ø 10 x 22mm  
M10 x 15mm  
M12 x 20mm  
38 x 38mm Plate  
42 x 42mm Plate  
55 x 55mm Plate

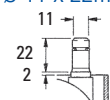
69  
71  
71  
73.5  
73.5  
75.5  
75.5  
78

-  
22  
22  
15  
20  
-  
-  
-

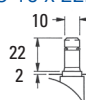
### ALUMINIUM RAL 9006 SOFT TYRE GRX6528 C-LINE



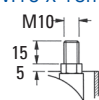
Ø 11 x 22mm



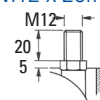
Ø 10 x 22



M10 x 15mm



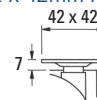
M12 x 20mm



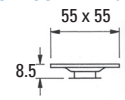
38 x 38mm Plate



42 x 42mm Plate



55 x 55mm Plate



# GRX6528FB WHEEL BRAKE C-LINE CASTORS

## SPECIFICATION

### CASTOR TYPE

Wheel Brake

### MATERIALS

Castor PA  
Soft Tyre PUR

### STANDARD COLOURS

Black  
Aluminium RAL 9006  
White RAL 9003

### STANDARDS

EN 12528

## TECHNISCHE DATEN

### ROLLEN TYP

Radfeststeller

### MATERIAL

Rollen PA  
Weiche Lauffläche PUR

### STANDARDFARBEN

Schwarz  
Aluminium RAL 9006  
Weiss RAL 9003

### NORMEN

EN 12528

## SPECIFICATION

### TYPE DE ROULETTE

Blocage de Roue

### MATIERES

Roulette PA  
Bandes Souples PUR

### COLORIS STANDARD

Noir  
Alu RAL 9006  
Blanc RAL 9003

### NORMES

EN 12528

## ESPECIFICACION

### TIPO DE RUEDA

Freno de Rueda

### MATERIALES

Rueda Nilón  
Rodadura Blanda Poliuretano

### COLORES ESTANDAR

Negro  
Plateado RAL 9006  
Blanco RAL 9003

### NORMAS

EN 12528



65



69



28



9



49



22.5



76



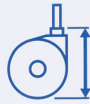
50kg

### NO.

3800-1-K  
3803-1-K  
3808-1-K  
3802-1-K  
3836-1-K  
3804-1-K  
3851-1-K  
3809-1-K



-----  
Ø 11 x 22mm  
Ø 10 x 22mm  
M10 x 15mm  
M12 x 20mm  
38 x 38mm Plate  
42 x 42mm Plate  
55 x 55mm Plate



69

71

71

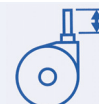
73.5

73.5

75.5

75.5

78



-

22

22

15

20

-

-

-

### BLACK - HARD WHEEL GRX6528FB C-LINE



### NO.

3800-1-1U-K  
3803-1-1U-K  
3808-1-1U-K  
3802-1-1U-K  
3836-1-1U-K  
3804-1-1U-K  
3851-1-1U-K  
3809-1-1U-K

-----  
Ø 11 x 22mm  
Ø 10 x 22mm  
M10 x 15mm  
M12 x 20mm  
38 x 38mm Plate  
42 x 42mm Plate  
55 x 55mm Plate

69

71

71

73.5

73.5

75.5

75.5

78

-

22

22

15

20

-

-

-

### BLACK - SOFT TYRE GRX6528FB C-LINE



### NO.

3800-3-3U-K  
3803-3-3U-K  
3808-3-3U-K  
3802-3-3U-K  
3836-3-3U-K  
3804-3-3U-K  
3851-3-3U-K  
3809-3-3U-K

-----  
Ø 11 x 22mm  
Ø 10 x 22mm  
M10 x 15mm  
M12 x 20mm  
38 x 38mm Plate  
42 x 42mm Plate  
55 x 55mm Plate

69

71

71

73.5

73.5

75.5

75.5

78

-

22

22

15

20

-

-

-

### WHITE RAL 9003 SOFT TYRE GRX6528FB C-LINE



### NO.

3800-64-64-T1U-K  
3803-64-64-T1U-K  
3808-64-64-T1U-K  
3802-64-64-T1U-K  
3836-64-64-T1U-K  
3804-64-64-T1U-K  
3851-64-64-T1U-K  
3809-64-64-T1U-K

-----  
Ø 11 x 22mm  
Ø 10 x 22mm  
M10 x 15mm  
M12 x 20mm  
38 x 38mm Plate  
42 x 42mm Plate  
55 x 55mm Plate

69

71

71

73.5

73.5

75.5

75.5

78

-

22

22

15

20

-

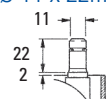
-

-

### ALUMINIUM RAL 9006 SOFT TYRE GRX6528FB C-LINE



Ø 11 x 22mm



Ø 10 x 22



M10 x 15mm



M12 x 20mm



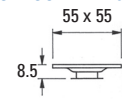
38 x 38mm Plate



42 x 42mm Plate



55 x 55mm Plate



# GRX6518 C-LINE CASTORS

## SPECIFICATION

### CASTOR TYPE

Swivel

### MATERIALS

Castor PA  
Soft Tyre PUR

### STANDARD COLOURS

Black  
Aluminium RAL 9006  
White RAL 9003

### STANDARDS

EN 12529

## TECHNISCHE DATEN

### ROLLEN TYP

Lenkrolle

### MATERIAL

Rollen PA  
Weiche Lauffläche PUR

### STANDARDFARBEN

Schwarz  
Aluminium RAL 9006  
Weiss RAL 9003

### NORMEN

EN 12529

## SPECIFICATION

### TYPE DE ROULETTE

Pivotante

### MATIERES

Roulette PA  
Bandes Souples PUR

### COLORIS STANDARD

Noir  
Alu RAL 9006  
Blanc RAL 9003

### NORMES

EN 12529

## ESPECIFICACION

### TIPO DE RUEDA

Giratoria

### MATERIALES

Rueda Nilón  
Rodadura Blanda Poliuretano

### COLORES ESTANDAR

Negro  
Plateado RAL 9006  
Blanco RAL 9003

### NORMAS

EN 12529



65



66



18



9



49



22.5



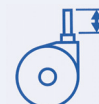
58



50kg



66



69.5

### NO.

6000-1-K  
6003-1-K  
6008-1-K  
6001-1-K

-----  
Ø 11 x 22mm  
Ø 10 x 22mm  
Ø 10 x 30mm

66  
69.5  
69.5  
66

-  
22  
22  
30

### BLACK - HARD WHEEL GRX6518 C-LINE



### NO.

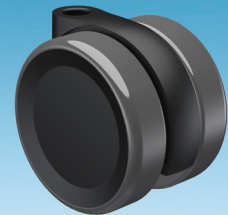
6000-1-1U-K  
6003-1-1U-K  
6008-1-1U-K  
6001-1-1U-K

-----  
Ø 11 x 22mm  
Ø 10 x 22mm  
Ø 10 x 30mm

66  
69.5  
69.5  
66

-  
22  
22  
30

### BLACK - SOFT TYRE GRX6518 C-LINE



### NO.

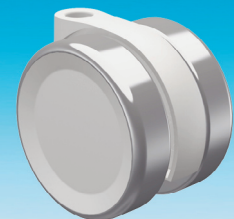
6000-3-3U-K  
6003-3-3U-K  
6008-3-3U-K  
6001-3-3U-K

-----  
Ø 11 x 22mm  
Ø 10 x 22mm  
Ø 10 x 30mm

66  
69.5  
69.5  
66

-  
22  
22  
30

### WHITE RAL 9003 SOFT TYRE GRX6518 C-LINE



### NO.

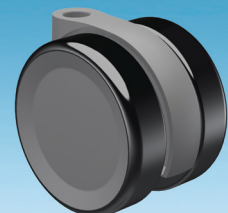
6000-64-64-T1U-K  
6003-64-64-T1U-K  
6008-64-64-T1U-K  
6001-64-64-T1U-K

-----  
Ø 11 X 22mm  
Ø 10 X 22mm  
Ø 10 X 30mm

66  
69.5  
69.5  
66

-  
22  
22  
30

### ALUMINIUM RAL 9006 SOFT TYRE GRX6518 C-LINE



Ø 11 x 22mm



Ø 10 x 22mm



Ø 10 x 30mm



## SPECIFICATION

### CASTOR TYPE

Swivel

### MATERIALS

Castor PA  
Soft Tyre PUR

### STANDARD COLOURS

Black  
Aluminium RAL 9006  
White RAL 9003

### STANDARDS

EN 12529

## TECHNISCHE DATEN

### ROLLEN TYP

Lenkrolle

### MATERIAL

Rollen PA  
Weiche Lauffläche PUR

### STANDARDFARBEN

Schwarz  
Aluminium RAL 9006  
Weiss RAL 9003

### NORMEN

EN 12529

## SPECIFICATION

### TYPE DE ROULETTE

Pivotante

### MATIERES

Roulette PA  
Bandes Souples PUR

### COLORIS STANDARD

Noir  
Alu RAL 9006  
Blanc RAL 9003

### NORMES

EN 12529

## ESPECIFICACION

### TIPO DE RUEDA

Giratoria

### MATERIALES

Rueda Nilón  
Rodadura Blanda Poliuretano

### COLORES ESTANDAR

Negro  
Plateado RAL 9006  
Blanco RAL 9003

### NORMAS

EN 12529



65



69



28



9



49



22.5



58



50kg



### NO.

3900-1-K  
3903-1-K  
3908-1-K  
3901-1-K

-----  
Ø 11 x 22mm  
Ø 10 x 22mm  
Ø 10 x 30mm

69  
71  
71  
69

-  
22  
22  
28.5

### BLACK - HARD WHEEL GRX6528 C-LINE



### NO.

3900-1-1U-K  
3903-1-1U-K  
3908-1-1U-K  
3901-1-1U-K

-----  
Ø 11 x 22mm  
Ø 10 x 22mm  
Ø 10 x 30mm

69  
71  
71  
69

-  
22  
22  
28.5

### BLACK - SOFT TYRE GRX6528 C-LINE



### NO.

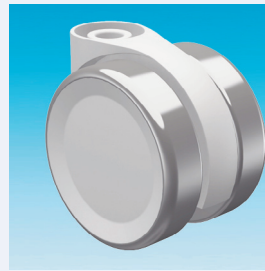
3900-3-3U-K  
3903-3-3U-K  
3908-3-3U-K  
3901-3-3U-K

-----  
Ø 11 x 22mm  
Ø 10 x 22mm  
Ø 10 x 30mm

69  
71  
71  
69

-  
22  
22  
28.5

### WHITE RAL 9003 SOFT TYRE GRX6528 C-LINE



### NO.

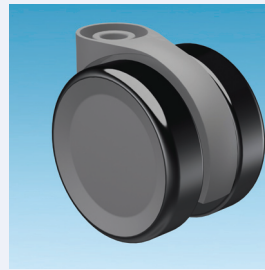
3900-64-64-T1U-K  
3903-64-64-T1U-K  
3908-64-64-T1U-K  
3901-64-64-T1U-K

-----  
Ø 11 x 22mm  
Ø 10 x 22mm  
Ø 10 x 30mm

69  
71  
71  
69

-  
22  
22  
28.5

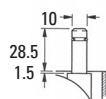
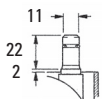
### ALUMINIUM RAL 9006 SOFT TYRE GRX6528 C-LINE



Ø 11 x 22mm

Ø 10 x 22mm

Ø 10 x 30mm



# GRX6536 C-LINE CASTORS

## SPECIFICATION

### CASTOR TYPE

Swivel

### MATERIALS

Castor PA  
Soft Tyre PUR

### STANDARD COLOURS

Black  
Aluminium RAL 9006  
White RAL 9003

### STANDARDS

EN 12529

## TECHNISCHE DATEN

### ROLLEN TYP

Lenkrolle

### MATERIAL

Rollen PA  
Weiche Lauffläche PUR

### STANDARDFARBEN

Schwarz  
Aluminium RAL 9006  
Weiss RAL 9003

### NORMEN

EN 12529

## SPECIFICATION

### TYPE DE ROULETTE

Pivotante

### MATIERES

Roulette PA  
Bandes Souples PUR

### COLORIS STANDARD

Noir  
Alu RAL 9006  
Blanc RAL 9003

### NORMES

EN 12529

## ESPECIFICACION

### TIPO DE RUEDA

Giratoria

### MATERIALES

Rueda Nilón  
Rodadura Blanda Poliuretano

### COLORES ESTANDAR

Negro  
Plateado RAL 9006  
Blanco RAL 9003

### NORMAS

EN 12529



65



69



36



9



49



22.5



58



50kg



### NO.

5400-1-K  
5403-1-K  
5408-1-K  
5401-1-K

-----  
Ø 11 x 22mm  
Ø 10 x 22mm  
Ø 10 x 30mm

69  
71  
71  
69

-  
22  
22  
28.5

### BLACK - HARD WHEEL GRX6536 C-LINE



### NO.

5400-1-1U-K  
5403-1-1U-K  
5408-1-1U-K  
5401-1-1U-K

-----  
Ø 11 x 22mm  
Ø 10 x 22mm  
Ø 10 x 30mm

69  
71  
71  
69

-  
22  
22  
28.5

### BLACK - SOFT TYRE GRX6536 C-LINE



### NO.

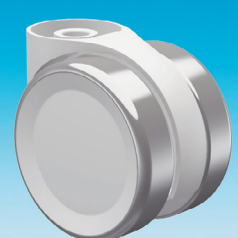
5400-3-3U-K  
5403-3-3U-K  
5408-3-3U-K  
5401-3-3U-K

-----  
Ø 11 x 22mm  
Ø 10 x 22mm  
Ø 10 x 30mm

69  
71  
71  
69

-  
22  
22  
28.5

### WHITE RAL 9003 SOFT TYRE GRX6536 C-LINE



### NO.

5400-64-64-T1U-K  
5403-64-64-T1U-K  
5408-64-64-T1U-K  
5401-64-64-T1U-K

-----  
Ø 11 x 22mm  
Ø 10 x 22mm  
Ø 10 x 30mm

69  
71  
71  
69

-  
22  
22  
28.5

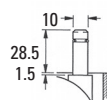
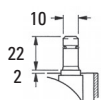
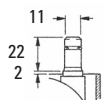
### ALUMINIUM RAL 9006 SOFT TYRE GRX6536 C-LINE



Ø 11 x 22mm

Ø 10 x 22mm

Ø 10 x 30mm





## SPECIFICATION

### CASTOR TYPE

Swivel

### MATERIALS

Castor PA  
Soft Tyre PUR

### STANDARD COLOURS

Black  
Aluminium RAL 9006  
White RAL 9003

### STANDARDS

EN 12529

## TECHNISCHE DATEN

### ROLLEN TYP

Lenkrolle

### MATERIAL

Rollen PA  
Weiche Lauffläche PUR

### STANDARDFARBEN

Schwarz  
Aluminium RAL 9006  
Weiss RAL 9003

### NORMEN

EN 12529

## SPECIFICATION

### TYPE DE ROULETTE

Pivotante

### MATIERES

Roulette PA  
Bandes Souples PUR

### COLORIS STANDARD

Noir  
Alu RAL 9006  
Blanc RAL 9003

### NORMES

EN 12529

## ESPECIFICACION

### TIPO DE RUEDA

Giratoria

### MATERIALES

Rueda Nilón  
Rodadura Blanda Poliuretano

### COLORES ESTANDAR

Negro  
Plateado RAL 9006  
Blanco RAL 9003

### NORMAS

EN 12529



65



69



41



9



49



22.5



58



50kg



### NO.

5600-1-K  
5603-1-K  
5608-1-K  
5601-1-K

-----  
Ø 11 x 22mm  
Ø 10 x 22mm  
Ø 10 x 30mm

69  
71  
71  
69

-  
22  
22  
28.5

### BLACK - HARD WHEEL GRX6541 C-LINE



### NO.

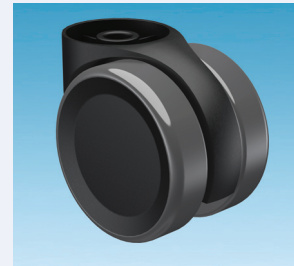
5600-1-1U-K  
5603-1-1U-K  
5608-1-1U-K  
5601-1-1U-K

-----  
Ø 11 x 22mm  
Ø 10 x 22mm  
Ø 10 x 30mm

69  
71  
71  
69

-  
22  
22  
28.5

### BLACK - SOFT TYRE GRX6541 C-LINE



### NO.

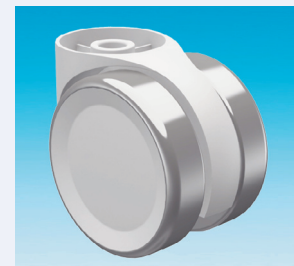
5600-3-3U-K  
5603-3-3U-K  
5608-3-3U-K  
5601-3-3U-K

-----  
Ø 11 x 22mm  
Ø 10 x 22mm  
Ø 10 x 30mm

69  
71  
71  
69

-  
22  
22  
28.5

### WHITE RAL 9003 SOFT TYRE GRX6541 C-LINE



### NO.

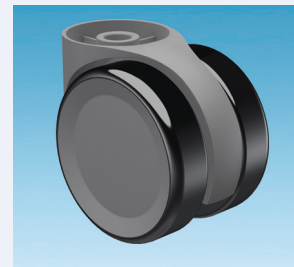
5600-64-64-T1U-K  
5603-64-64-T1U-K  
5608-64-64-T1U-K  
5601-64-64-T1U-K

-----  
Ø 11 x 22mm  
Ø 10 x 22mm  
Ø 10 x 30mm

69  
71  
71  
69

-  
22  
22  
28.5

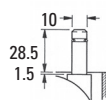
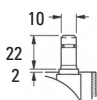
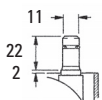
### ALUMINIUM RAL 9006 SOFT TYRE GRX6541 C-LINE



Ø 11 x 22mm

Ø 10 x 22mm

Ø 10 x 30mm



# GRX6518BU C-LINE BRAKE UNLOADED CASTORS

## SPECIFICATION

### CASTOR TYPE

Brake Unloaded

### MATERIALS

Castor PA  
Soft Tyre PUR

### STANDARD COLOURS

Black  
Aluminium RAL 9006  
White RAL 9003

### STANDARDS

EN 12529 TYPE U

## TECHNISCHE DATEN

### ROLLEN TYP

Lastabhagig Gebremst

### MATERIAL

Rollen PA  
Weiche Laufflache PUR

### STANDARDFARBEN

Schwarz  
Aluminium RAL 9006  
Weiss RAL 9003

### NORMEN

EN 12529 TYP U

## SPECIFICATION

### TYPE DE ROULETTE

Autofreine

### MATIERES

Roulette PA  
Bandes Souples PUR

### COLORIS STANDARD

Noir  
Alu RAL 9006  
Blanc RAL 9003

### NORMES

EN 12529 TYPE U

## ESPECIFICACION

### TIPO DE RUEDA

Autofrenado

### MATERIALES

Rueda Nilon  
Rodadura Blanda Poliuretano

### COLORES ESTANDAR

Negro  
Plateado RAL 9006  
Blanco RAL 9003

### NORMAS

EN 12529 TIPO U



65



67



18



9



49



22.5



58



50kg



### NO.

8800-1-K  
8803-1-K  
8808-1-K  
8801-1-K

-----  
Ø 11 x 22mm  
Ø 10 x 22mm  
Ø 10 x 30mm

67  
70.5  
70.5  
67

-  
22  
22  
30

### BLACK - HARD WHEEL GRX6518BU C-LINE



### NO.

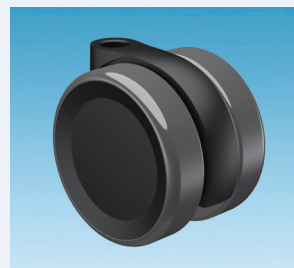
8800-1-1U-K  
8803-1-1U-K  
8808-1-1U-K  
8801-1-1U-K

-----  
Ø 11 x 22mm  
Ø 10 x 22mm  
Ø 10 x 30mm

67  
70.5  
70.5  
67

-  
22  
22  
30

### BLACK - SOFT TYRE GRX6518BU C-LINE



### NO.

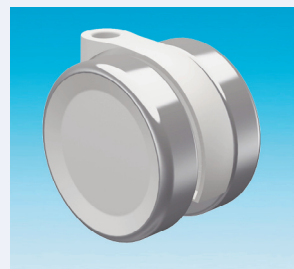
8800-3-3U-K  
8803-3-3U-K  
8808-3-3U-K  
8801-3-3U-K

-----  
Ø 11 x 22mm  
Ø 10 x 22mm  
Ø 10 x 30mm

67  
70.5  
70.5  
67

-  
22  
22  
30

### WHITE RAL 9003 SOFT TYRE GRX6518BU C-LINE



### NO.

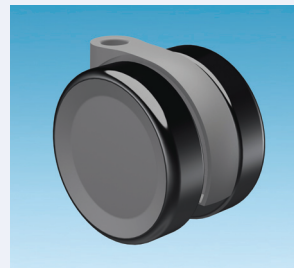
8800-64-64-T1U-K  
8803-64-64-T1U-K  
8808-64-64-T1U-K  
8801-64-64-T1U-K

-----  
Ø 11 x 22mm  
Ø 10 x 22mm  
Ø 10 x 30mm

67  
70.5  
70.5  
67

-  
22  
22  
30

### ALUMINIUM RAL 9006 SOFT TYRE GRX6518BU C-LINE



Ø 11 x 22mm

Ø 10 x 22mm

Ø 10 x 30mm



# GRX6528BU C-LINE BRAKE UNLOADED CASTORS

## SPECIFICATION

### CASTOR TYPE

Brake Unloaded

### MATERIALS

Castor PA  
Soft Tyre PUR

### STANDARD COLOURS

Black  
Aluminium RAL 9006  
White RAL 9003

### STANDARDS

EN 12529 TYPE U

## TECHNISCHE DATEN

### ROLLEN TYP

Lastabhagig Gebremst

### MATERIAL

Rollen PA  
Weiche Laufflache PUR

### STANDARDFARBEN

Schwarz  
Aluminium RAL 9006  
Weiss RAL 9003

### NORMEN

EN 12529 TYP U

## SPECIFICATION

### TYPE DE ROULETTE

Autofreine

### MATIERES

Roulette PA  
Bandes Souples PUR

### COLORIS STANDARD

Noir  
Alu RAL 9006  
Blanc RAL 9003

### NORMES

EN 12529 TYPE U

## ESPECIFICACION

### TIPO DE RUEDA

Autofrenado

### MATERIALES

Rueda Nilon  
Rodadura Blanda Poliuretano

### COLORES ESTANDAR

Negro  
Plateado RAL 9006  
Blanco RAL 9003

### NORMAS

EN 12529 TIPO U



65



70



28



9



49



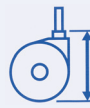
22.5



58



50kg



### NO.

6100-1-K  
6103-1-K  
6108-1-K  
6101-1-K

-----  
Ø 11 x 22mm  
Ø 10 x 22mm  
Ø 10 x 30mm

70  
72  
72  
70

-  
22  
22  
28.5

### BLACK - HARD WHEEL GRX6528BU C-LINE



### NO.

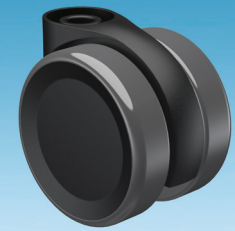
6100-1-1U-K  
6103-1-1U-K  
6108-1-1U-K  
6101-1-1U-K

-----  
Ø 11 x 22mm  
Ø 10 x 22mm  
Ø 10 x 30mm

70  
72  
72  
70

-  
22  
22  
28.5

### BLACK - SOFT TYRE GRX6528BU C-LINE



### NO.

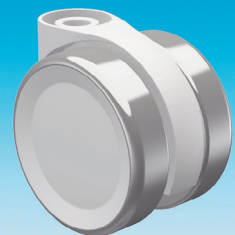
6100-3-3U-K  
6103-3-3U-K  
6108-3-3U-K  
6101-3-3U-K

-----  
Ø 11 x 22mm  
Ø 10 x 22mm  
Ø 10 x 30mm

70  
72  
72  
70

-  
22  
22  
28.5

### WHITE RAL 9003 SOFT TYRE GRX6528BU C-LINE



### NO.

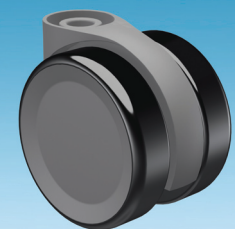
6100-64-64-T1U-K  
6103-64-64-T1U-K  
6108-64-64-T1U-K  
6101-64-64-T1U-K

-----  
Ø 11 x 22mm  
Ø 10 x 22mm  
Ø 10 x 30mm

70  
72  
72  
70

-  
22  
22  
28.5

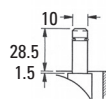
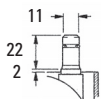
### ALUMINIUM RAL 9006 SOFT TYRE GRX6528BU C-LINE



Ø 11 x 22mm

Ø 10 x 22mm

Ø 10 x 30mm



# GRX6536BU C-LINE BRAKE UNLOADED CASTORS

## SPECIFICATION

### CASTOR TYPE

Brake Unloaded

### MATERIALS

Castor PA  
Soft Tyre PUR

### STANDARD COLOURS

Black  
Aluminium RAL 9006  
White RAL 9003

### STANDARDS

EN 12529 TYPE U

## TECHNISCHE DATEN

### ROLLEN TYP

Lastabhängig Gebremst

### MATERIAL

Rollen PA  
Weiche Lauffläche PUR

### STANDARDFARBEN

Schwarz  
Aluminium RAL 9006  
Weiss RAL 9003

### NORMEN

EN 12529 TYP U

## SPECIFICATION

### TYPE DE ROULETTE

Autofreiné

### MATIERES

Roulette PA  
Bandes Souples PUR

### COLORIS STANDARD

Noir  
Alu RAL 9006  
Blanc RAL 9003

### NORMES

EN 12529 TYPE U

## ESPECIFICACION

### TIPO DE RUEDA

Autofrenado

### MATERIALES

Rueda Nilón  
Rodadura Blanda Poliuretano

### COLORES ESTANDAR

Negro  
Plateado RAL 9006  
Blanco RAL 9003

### NORMAS

EN 12529 TIPO U



65



70



36



9



49



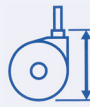
22.5



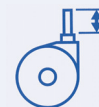
58



50kg



70



22

### NO.

8100-1-K  
8103-1-K  
8108-1-K  
8101-1-K

-----  
Ø 11 x 22mm  
Ø 10 x 22mm  
Ø 10 x 30mm

### BLACK - HARD WHEEL GRX6536BU C-LINE



### NO.

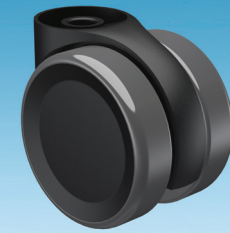
8100-1-1U-K  
8103-1-1U-K  
8108-1-1U-K  
8101-1-1U-K

-----  
Ø 11 x 22mm  
Ø 10 x 22mm  
Ø 10 x 30mm

70  
72  
72  
70

-  
22  
22  
28.5

### BLACK - SOFT TYRE GRX6536BU C-LINE



### NO.

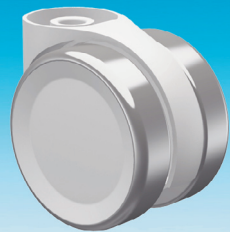
8100-3-3U-K  
8103-3-3U-K  
8108-3-3U-K  
8101-3-3U-K

-----  
Ø 11 x 22mm  
Ø 10 x 22mm  
Ø 10 x 30mm

70  
72  
72  
70

-  
22  
22  
28.5

### WHITE RAL 9003 SOFT TYRE GRX6536BU C-LINE



### NO.

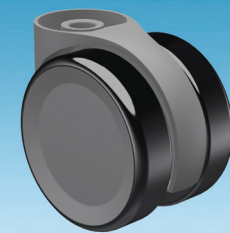
8100-64-64-T1U-K  
8103-64-64-T1U-K  
8108-64-64-T1U-K  
8101-64-64-T1U-K

-----  
Ø 11 x 22mm  
Ø 10 x 22mm  
Ø 10 x 30mm

70  
72  
72  
70

-  
22  
22  
28.5

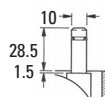
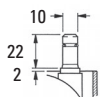
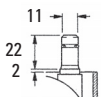
### ALUMINIUM RAL 9006 SOFT TYRE GRX6536BU C-LINE



Ø 11 x 22mm

Ø 10 x 22mm

Ø 10 x 30mm



# GRX6541BU C-LINE BRAKE UNLOADED CASTORS

## SPECIFICATION

### CASTOR TYPE

Brake Unloaded

### MATERIALS

Castor PA  
Soft Tyre PUR

### STANDARD COLOURS

Black  
Aluminium RAL 9006  
White RAL 9003

### STANDARDS

EN 12529 TYPE U

## TECHNISCHE DATEN

### ROLLEN TYP

Lastabhängig Gebremst

### MATERIAL

Rollen PA  
Weiche Lauffläche PUR

### STANDARDFARBEN

Schwarz  
Aluminium RAL 9006  
Weiss RAL 9003

### NORMEN

EN 12529 TYP U

## SPECIFICATION

### TYPE DE ROULETTE

Autofreiné

### MATIERES

Roulette PA  
Bandes Souples PUR

### COLORIS STANDARD

Noir  
Alu RAL 9006  
Blanc RAL 9003

### NORMES

EN 12529 TYPE U

## ESPECIFICACION

### TIPO DE RUEDA

Autofrenado

### MATERIALES

Rueda Nilón  
Rodadura Blanda Poliuretano

### COLORES ESTANDAR

Negro  
Plateado RAL 9006  
Blanco RAL 9003

### NORMAS

EN 12529 TIPO U



65



70



41



9



49



22.5



58



50kg



### NO.

4300-1-K  
4303-1-K  
4308-1-K  
4301-1-K

-----  
Ø 11 x 22mm  
Ø 10 x 22mm  
Ø 10 x 30mm

70  
72  
72  
70

-  
22  
22  
28.5

### BLACK - HARD WHEEL GRX6541BU C-LINE



### NO.

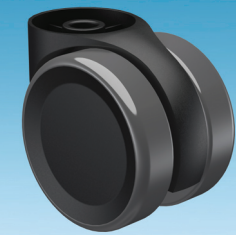
4300-1-1U-K  
4303-1-1U-K  
4308-1-1U-K  
4301-1-1U-K

-----  
Ø 11 x 22mm  
Ø 10 x 22mm  
Ø 10 x 30mm

70  
72  
72  
70

-  
22  
22  
28.5

### BLACK - SOFT TYRE GRX6541BU C-LINE



### NO.

4300-3-3U-K  
4303-3-3U-K  
4308-3-3U-K  
4301-3-3U-K

-----  
Ø 11 x 22mm  
Ø 10 x 22mm  
Ø 10 x 30mm

70  
72  
72  
70

-  
22  
22  
28.5

### WHITE RAL 9003 SOFT TYRE GRX6541BU C-LINE



### NO.

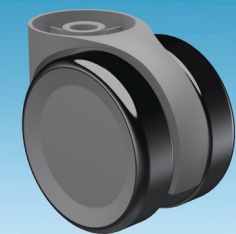
4300-64-64-T1U-K  
4303-64-64-T1U-K  
4308-64-64-T1U-K  
4301-64-64-T1U-K

-----  
Ø 11 x 22mm  
Ø 10 x 22mm  
Ø 10 x 30mm

70  
72  
72  
70

-  
22  
22  
28.5

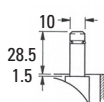
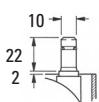
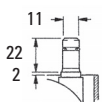
### ALUMINIUM RAL 9006 SOFT TYRE GRX6541BU C-LINE



Ø 11 x 22mm

Ø 10 x 22mm

Ø 10 x 30mm



# GRX6518BL C-LINE BRAKE LOADED CASTORS

## SPECIFICATION

### CASTOR TYPE

Brake Loaded

### MATERIALS

Castor PA  
Soft Tyre PUR

### STANDARD COLOURS

Black

### STANDARDS

EN 12529: 4.3, 5.2, 5.4, 5.5, 5.6, & 7.1

## TECHNISCHE DATEN

### ROLLEN TYP

Balastet Gebremst

### MATERIAL

Rollen PA  
Weiche Lauffläche PUR

### STANDARDFARBEN

Schwarz

### NORMEN

EN 12529: 4.3, 5.2, 5.4, 5.5, 5.6, & 7.1,

## SPECIFICATION

### TYPE DE ROULETTE

Freiné sous charge

### MATIERES

Roulette PA  
Bandes Souples PUR

### COLORIS STANDARD

Noir

### NORMES

EN 12529: 4.3, 5.2, 5.4, 5.5, 5.6, & 7.1

## ESPECIFICACION

### TIPO DE RUEDA

Frena con carga

### MATERIALES

Rueda Nilón  
Rodadura Blanda Poliuretano

### COLORES ESTANDAR

Negro

### NORMAS

EN 12529: 4.3, 5.2, 5.4, 5.5, 5.6, & 7.1



65



66



18



9



49



22.5



58



50kg

### NO.

3W00-1-K  
3W03-1-K  
3W08-1-K  
3W02-1-K  
3W36-1-K  
3W04-1-K  
3W51-1-K  
3W09-1-K



67

70.5

-

22

Ø 11 x 22mm

Ø 10 x 22mm

M10 x 15mm

M12 x 20mm

38 x 38mm Plate

42 x 42mm Plate

55 x 55mm Plate

70.5

73.5

73.5

75.5

75.5

78

22

15

20

-

-

-

### BLACK - HARD WHEEL GRX6518BL C-LINE



### NO.

3W00-1-U-K  
3W03-1-U-K  
3W08-1-U-K  
3W02-1-U-K  
3W36-1-U-K  
3W04-1-U-K  
3W51-1-U-K  
3W09-1-U-K

Ø 11 x 22mm

Ø 10 x 22mm

M10 x 15mm

M12 x 20mm

38 x 38mm Plate

42 x 42mm Plate

55 x 55mm Plate

67

70.5

70.5

73.5

73.5

75.5

75.5

78

-

22

22

15

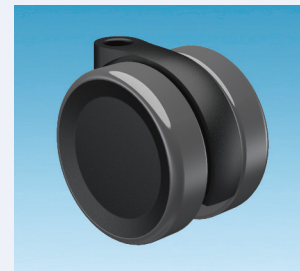
20

-

-

-

### BLACK - SOFT TYRE GRX6518BL C-LINE



Ø 11 x 22mm

Ø 10 x 22mm

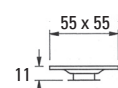
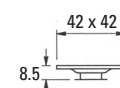
M10 x 15mm

M12 x 20mm

38 x 38 mm Plate

42 x 42mm Plate

55 x 55mm Plate



## SPECIFICATION MATERIALS

Steel BZP

## TECHNISCHE DATEN MATERIAL

Stahl Verzinkt

## SPECIFICATION MATIERES

Acier, plaqué de zinc

## ESPECIFICACION MATERIALES

Acero chapado de zinc

